

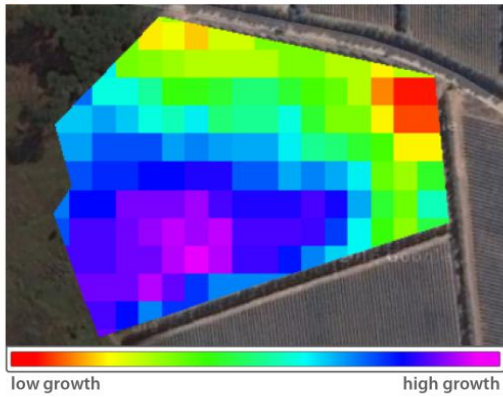
**fruitlook.co.za** helps farmers to define management zones and decide on sampling points for better field and crop management

**Views of a vineyard block**

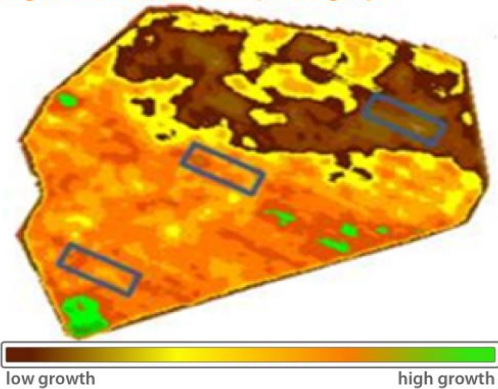
A vineyard near Somerset West



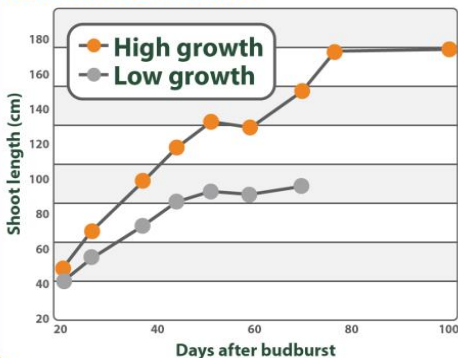
FruitLook shows clear growth variation in this block



This variation is also visible in a high-resolution aerial photograph



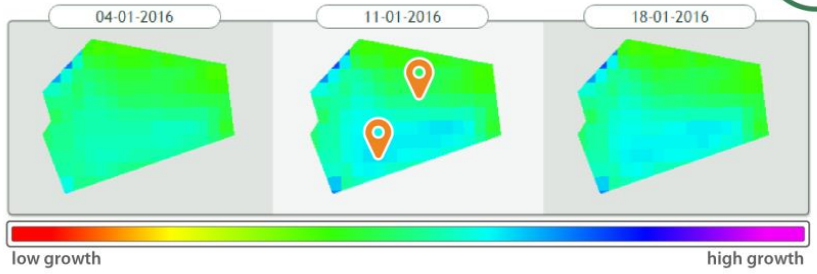
Field measurements of shoot growth confirm this variation



**How to create sampling zones using FruitLook**

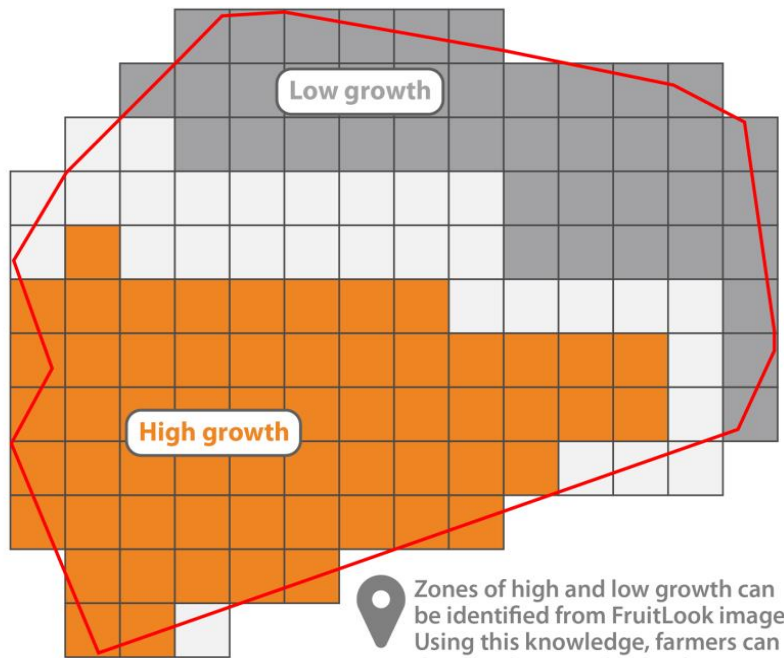


**Biomass production**



Biomass production over time can help farmers identify growth variation in a block

Identifying distinct zones in these blocks can help farmers identify where to sample fruits or leaves

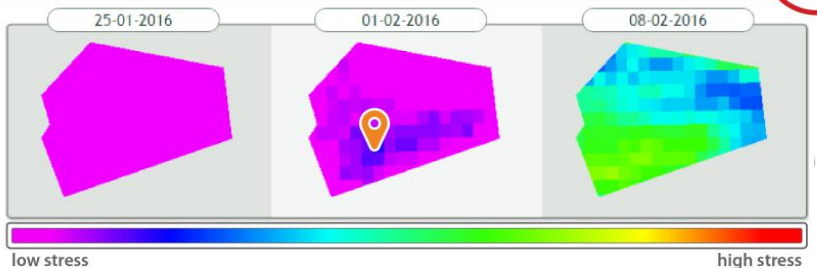


Zones of high and low growth can be identified from FruitLook images. Using this knowledge, farmers can decide where to place soil moisture probes or take samples

**Where to place soil moisture probes**



**Evapotranspiration deficit**



Evapotranspiration deficit over time will show which areas in a block are prone to stress

Soil moisture probes at these locations will give early warnings of crop stress